



学部・大学院一貫教育における教育高度化プログラムの研究と開発

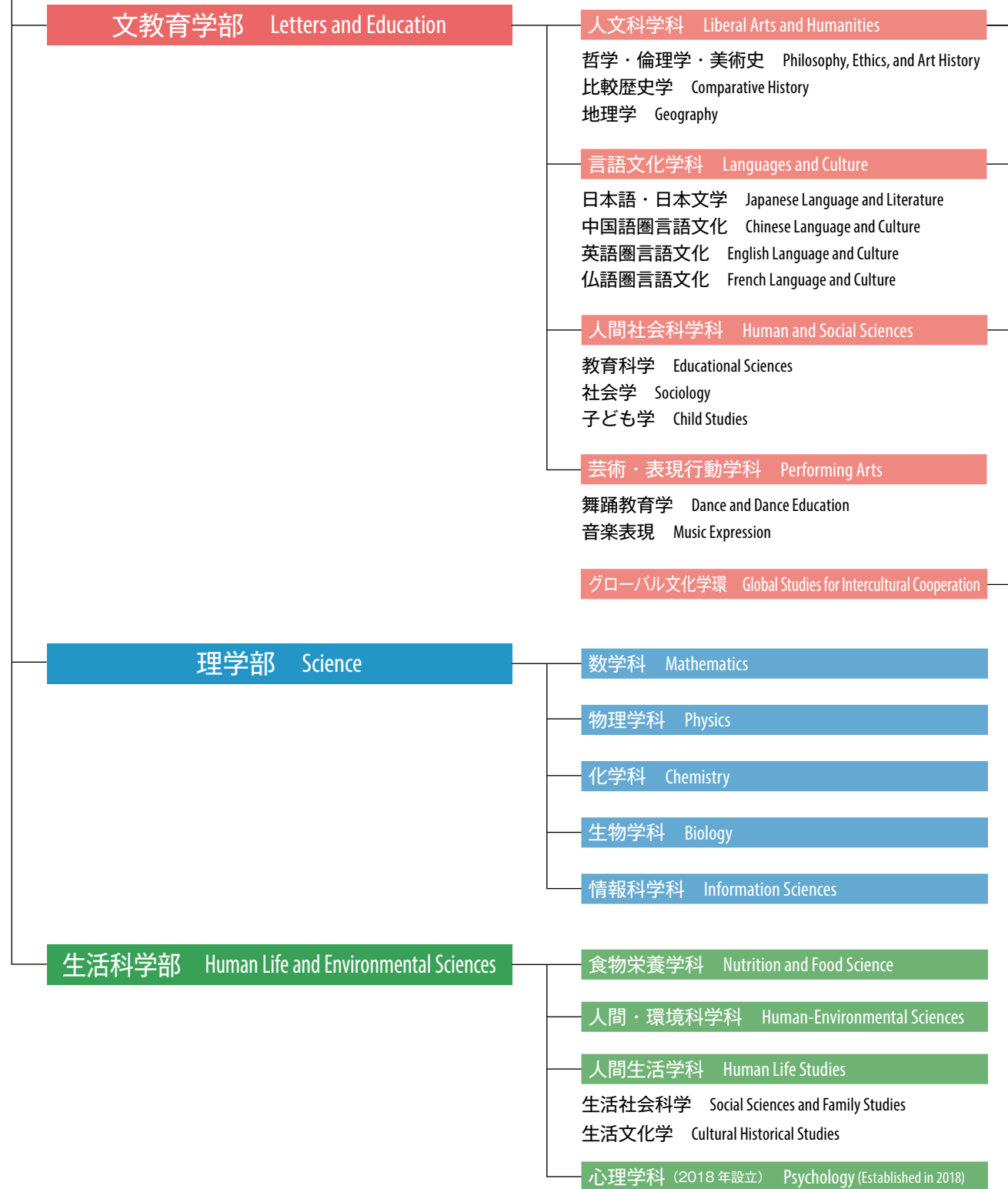
Undergraduate-Graduate Integrated Education Enhancement Project Research and Development

学士・修士一貫トラック：大学院進学を志願する学生に対し、学部3年次から大学院授業科目の履修や教育指導を行うことにより、学部と大学院の教育を架橋し、専門的な学修を促進する制度
Six-year academic track: This system targets students aspiring to pursue graduate-level studies. The completion of graduate course curriculums as well as the availability of research guidance and other opportunities from the third undergraduate year onward serve as a bridge between undergraduate and graduate education that promote more specialized learning.

LSH indicates related Faculty (L Letters and Education, S Science, H Human Life and Environmental Sciences)

学部 Undergraduate Faculties

大学院 Graduate School



※ 学士・修士一貫トラックを、博士前期課程の8コースで導入
 * The six-year academic track will be introduced in eight master's level courses.